

CERTIFICATE OF CONSTANCY OF PERFORMANCE

N° 2822-UKCA-CPR-0010

In compliance with Regulation 2020 N°1359 of The construction Products (EU exit) Regulation 2020, it was established that the construction product:

| | |
|--|---|
| Product | Smoke Control Damper |
| Reference of the product | KAMOUFLAGE |
| Placed on the market by or for | RF TECHNOLOGIES Lange Ambachtstraat 40 9860 Oosterzele Belgium |
| and produced in the manufacturing plant located in | Slovakia |

is submitted by the manufacturer to a factory production control, and that the approved certification body EFACTIS UK/Ireland, has performed the initial type-testing for the relevant characteristics of the product, the initial inspection of the factory and of the factory production control and performs the continuous surveillance, assessment and approval of factory production control.

This certificate attests that all provisions concerning the assessment and verification of constancy of performance and the performance, described in Annex ZA of the standard **BS EN 12101-8:2011** under system 1 are applied, and that the product(s) fulfil(s) all the prescribed requirements set out above.

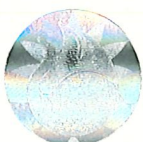
This certificate, first issued on **June 9th 2022**, remains valid as long as the test methods and/or factory production control requirements included in the harmonised standard, used to assess the performance of the declared characteristics, do not change, and the product and the manufacturing conditions in the plant are not modified significantly.

This certificate allows the manufacturer, its mandatories or its distributors, stated in the United Kingdom Economic Area, to affix the UKCA marking.

Certificate established at Belfast on: **09/06/2022**

By the Technical Certification Director,


Daniel Joyeux
Technical Certification Director



Approved body
Nr 2822

**ANNEX TO THE CERTIFICATE OF CONSTANCY OF PERFORMANCE
TO THE STANDARD EN 12101-8:2011**

Product **Smoke Control Damper**

Reference of the product **KAMOUFLAGE**

Certificate delivered to **RF TECHNOLOGIES
Lange Ambachtstraat 40
9860 Oosterzele
Belgium**

Description of the field covered by the certificate:

CLASSIFICATION

In accordance with the classification report issued by Efectis France n° 14-A-178 rev.4.

KAMOUFLAGE (H) 1V/2V 60 Mounted in a duct made of:

- PROMATECT L500 (Promat) Thickness = 30 mm
- GEOFLAM (Geostaff) Thickness = 30 mm
- TECHIVER L35 (CF Distribution) Thickness = 35 mm
- GLASROC F/V500 (Placoplatre) Thickness = 35 mm
- GEOTEC S (Geostaff) Thickness = 30 mm
- EXTHAMAT Thickness = 25 mm
- DESENFIRE HD Thickness = 25 mm
- Prefabricated reinforced concrete Thickness = 70 mm

| | | | | | | | | | | | |
|---|---|----|-----------------|----------------|---|---|---|---|--------------------|----|----------------|
| E | I | t | V _{ed} | h _o | i | ↔ | o | S | Operating Pressure | AA | Multi / Single |
| E | I | 60 | V _{ed} | - | i | ↔ | o | S | -1500 Pa to 0 Pa | AA | Multi |

KAMOUFLAGE DP (H) 1V 60 Mounted in a duct made of:

- PROMATECT L500 (Promat) Thickness = 30 mm
- GEOFLAM (Geostaff) Thickness = 30 mm
- TECHIVER L35 (CF Distribution) Thickness = 35 mm
- GLASROC F/V500 (Placoplatre) Thickness = 35 mm
- GEOTEC S (Geostaff) Thickness = 30 mm
- EXTHAMAT Thickness = 25 mm
- DESENFIRE HD Thickness = 25 mm
- Prefabricated reinforced concrete Thickness = 70 mm

| | | | | | | | | | | | |
|---|---|----|-----------------|----------------|---|---|---|---|--------------------|----|----------------|
| E | I | t | V _{ed} | h _o | i | ↔ | o | S | Operating Pressure | AA | Multi / Single |
| E | I | 60 | V _{ed} | - | i | ↔ | o | S | -500 Pa to 0 Pa | AA | Multi |



Approved body
Nr 2822

Kamouflage 1V (ME) /2V 120 or KAMOUFLAGE H 1V/H 2V 120 fitted with grille installed Mounted in a duct made of:

- | | |
|-------------------------------------|-------------------|
| - PROMATECT L500 (Promat) | Thickness =40 mm |
| - GEOFLAM (Geostaff) | Thickness = 35 mm |
| - TECNIVER L35 (CF Distribution) | Thickness = 45 mm |
| - EXTHAMAT (EXTHA) | Thickness = 30 mm |
| - DESENFIRE THD (MF Industries) | Thickness = 25 mm |
| - Prefabricated reinforced concrete | Thickness =70 mm |

| | | | | | | | | | | | |
|---|---|----|-----------------|----------------|---|---|---|---|--------------------|----|-------|
| E | I | t | V _{ed} | h _o | i | ↔ | o | S | Operating Pressure | AA | multi |
| E | I | 90 | V _{ed} | - | i | ↔ | o | S | -1500 Pa to 0 Pa | AA | multi |

Kamouflage DP 60 fitted with grille installed Mounted in a duct made of:

- | | |
|-------------------------------------|-------------------|
| - PROMATECT L500 (Promat) | Thickness =40 mm |
| - GEOFLAM (Geostaff) | Thickness = 35 mm |
| - TECNIVER L35 (CF Distribution) | Thickness = 45 mm |
| - EXTHAMAT (EXTHA) | Thickness = 30 mm |
| - DESENFIRE THD (MF Industries) | Thickness = 25 mm |
| - Prefabricated reinforced concrete | Thickness =70 mm |

| | | | | | | | | | | | |
|---|---|----|-----------------|----------------|---|---|---|---|--------------------|----|-------|
| E | I | t | V _{ed} | h _o | i | ↔ | o | S | Operating Pressure | AA | multi |
| E | I | 90 | V _{ed} | - | i | ↔ | o | S | -500 Pa to 0 Pa | AA | multi |

Kamouflage 1V/2V 120 Mounted in a duct made of:

- | | |
|----------------------------------|-------------------|
| - PROMATECT L500 (Promat) | Thickness = 50 mm |
| - GEOFLAM (Geostaff) | Thickness = 45 mm |
| - GEOFLAM LIGHT (Geostaff) | Thickness = 35 mm |
| - TECNIVER L50 (CF Distribution) | Thickness = 45 mm |
| - GLASROC F/V500 (Placoplatre) | Thickness = 50 mm |
| - GEOTEC® S (Geostaff) | Thickness = 45 mm |
| - DESENFIRE (MF Industries) | Thickness = 45 mm |
| - DESENFIRE HD (MF Industries) | Thickness = 35 mm |
| - EXTHAMAT | Thickness = 35 mm |
| - DESENFIRE STR | Thickness = 25 mm |

| | | | | | | | | | | | |
|---|---|-----|-----------------|----------------|---|---|---|---|--------------------|----|-------|
| E | I | t | V _{ed} | h _o | i | ↔ | o | S | Operating Pressure | AA | multi |
| E | I | 120 | V _{ed} | - | i | ↔ | o | S | -1500 Pa to 0 Pa | AA | multi |



Approved body
Nr 2822

Kamouflage 1V DP 120 Mounted in a duct made of:

| | |
|----------------------------------|-------------------|
| - PROMATECT L500 (Promat) | Thickness = 50 mm |
| - GEOFLAM (Geostaff) | Thickness = 45 mm |
| - GEOFLAM LIGHT (Geostaff) | Thickness = 35 mm |
| - GEOTEC® S (Geostaff) | Thickness = 45 mm |
| - EXTHAMAT | Thickness = 35 mm |
| - DESENFIRE HD (MF Industries) | Thickness = 35 mm |
| - DESENFIRE (MF Industries) | Thickness = 45 mm |
| - DESENFIRE (MF Industries) STR | Thickness = 25 mm |
| - TECNIVER L50 (CF Distribution) | Thickness = 45 mm |
| - GLASROC F/V500 (Placoplatre) | Thickness = 50 mm |

| | | | | | | | | | | | |
|---|---|-----|-----------------|----------------|---|---|---|---|--------------------|----|-------|
| E | I | t | V _{ed} | h _o | i | ↔ | o | S | Operating Pressure | AA | multi |
| E | I | 120 | V _{ed} | - | i | ↔ | o | S | -500 Pa to 0 Pa | AA | multi |

DESCRIPTION OF THE RANGE

Smoke Control Damper 1 or 2 leaves without grill.

Embedding Dimensions:

- Leaf made of PROMATEC H Thickness 15 mm, plasterboard of 9.5m (side opposite to fire) and galvanised steel profiles
- 1 leaf: 300 x 385 to 700 x 1075 mm
- 2 leaves: 350 x 385 to 1100 x 1105 mm

CONTROL SYSTEM / CONTROL MECHANISM

Hand Driven mechanism with lock and electrical activation by degaussing of the suction pad.
Position detection by position gages.
Position opening maintained with a steel arm.

APPROVED ACCESSORIES

- Paints on the leaf and the frame on the side unexposed to fire
- Glued wall paper on the side not exposed to fire
- Antifall device type KGD
- Aluminium film on the unexposed plasterboard side of the leaf
- Pre-frame type EASY-KAP or EASY-KGC with or without mastic seal
- Mastic seal applied in the corner formed by the frame and the wall
- Addition of an additional plate on the leaf, maximum thickness: 20 mm
- Aluminium plate maximum thickness 0.8 mm or steel plate maximum thickness 0.5 mm pre-mounted on the leaf

LEAK TIGHTNESS

Leak tightness at ambient temperature:

- Rubber Seal
- Or Silicone Seal with dimensions 14.7 x 14.4 mm VAME-D217 (RFT) crimped in the extruded section of the tunnel

Leak tightness at elevated temperature:

- Intumescent seal



Approved body
Nr 2822

FIELD OF APPLICATION

Multi-compartment smoke dampers can be applied to ducts tested in accordance with EN 1366-8, constructed from materials of the same density as those tested or from the same material but with a greater density or thickness, provided that the service pressure allowed in the classification report for the end-used duct is compatible

Certificate established at Belfast on: **09/06/2022**

By the Technical Certification Director,



Daniel Joyeux
Technical Certification Director



Approved body
Nr 2822