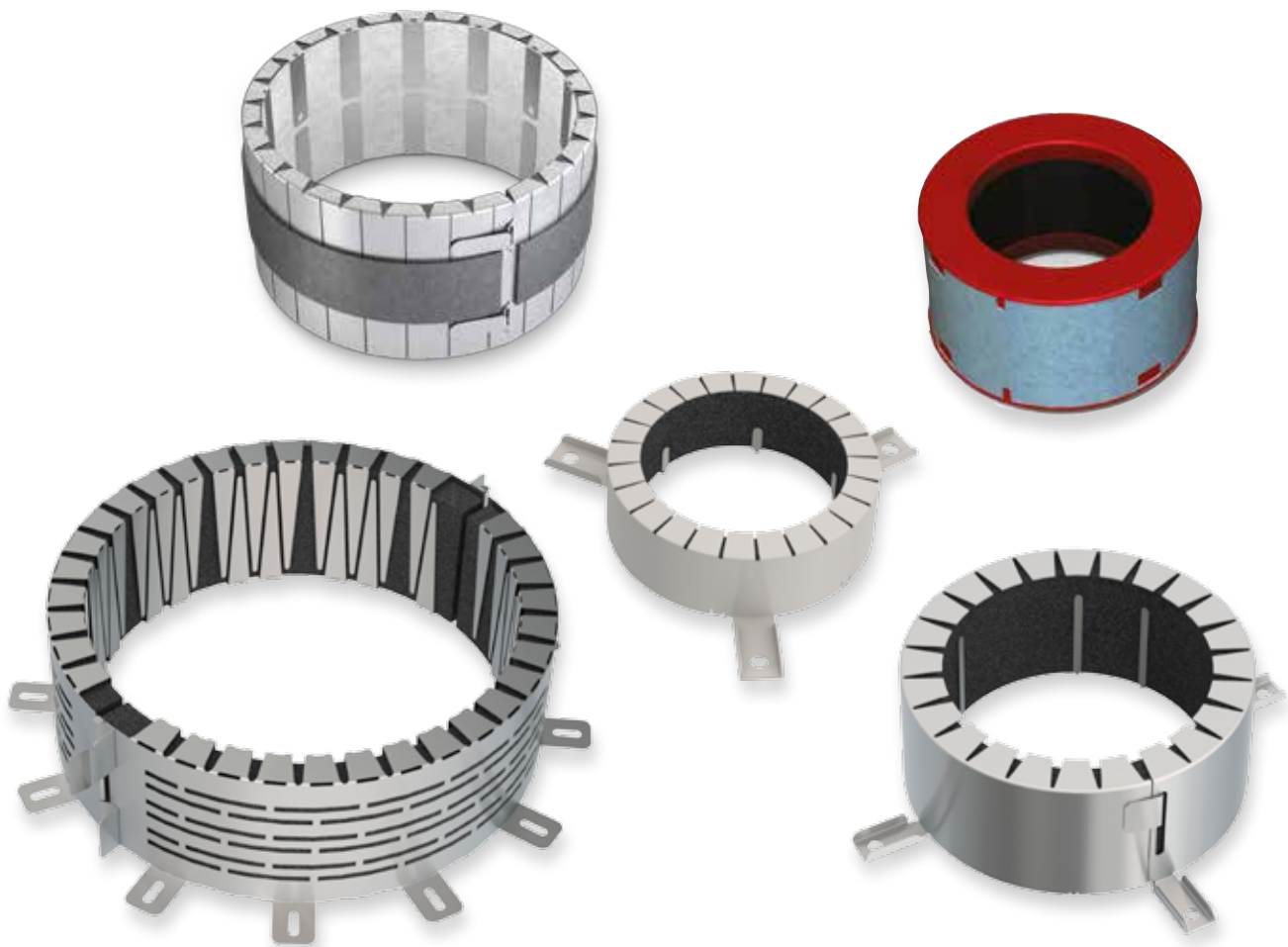


FIRE-RESISTANT






COLLARS



When combustible plastic pipes burn away during a fire, openings appear in fire compartmentation walls. Fire-resistant collars are applied around such pipes to prevent fire from spreading to other compartments. They expand through heat, thus closing off the openings and restoring the fire-resistance. Rf-Technologies offers a full range of built-in and surface-mounted fire collars that are characterised by their easy installation and their extensive field of application.

CE

Our full range of fire-resistant collars

	INSTALLATION	CLASSIFICATION	Ø	CONSTRUCTION	PIPE TYPE
MG-U	Built-in	U/U	32-160 mm		PVC, PE, ABS, SAN+PVC, PP
MG2-A U	Surface mounted	U/U	32-160 mm		PVC, PE, ABS, SAN+PVC, PP
MG2	Built-in	U/C - C/C	40-160 mm		PVC, PE, ABS, SAN+PVC
MG2-A	Surface mounted	U/C - C/C	32-160 mm		PVC, PE, ABS, SAN+PVC
MG2-A XL	Surface mounted	U/C - C/C	200-400 mm		PVC, PE, ABS, SAN+PVC

U/U - U/C - C/C - suited for ventilated and non-ventilated plastic pipes

MG-U



- Sealing with standard PUR foam
- Fast installation with or without screws
- No room is lost at the wall crossing
- Aesthetic and invisible finishing



Built-in



fast and easy installation (sealing with classic, non fire-resistant PUR foam)



Aesthetic solution



Suitable for PVC



Suitable for PE, ABS and SAN+ PVC pipes



Suitable for PP



Tested U/U



Tested U/C



Tested C/C



Rigid wall



Rigid floor

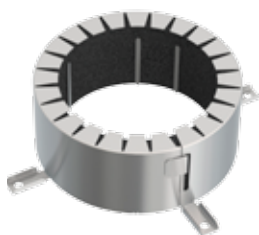


Flexible wall (metal studs)



Water- and frost-resistant

MG2-A U



- Fast installation
- Standard tools, no sealing required
- Suitable for ventilated plastic pipes



Surface-mounted



Suitable for PVC



Suitable for PE



Tested U/U



Tested U/C



Tested C/C



Rigid wall



Rigid floor



Flexible wall (metal studs)



Water- and frost-resistant

U/C - C/C - suited for non-ventilated plastic pipes

MG2



- Aesthetic and invisible finishing
- No room is lost at the wall crossing
- Standard tools and sealing
- MG2+R model is pre-mounted on a PE pipe

Built-in	Water- and frost-resistant	Aesthetic solution
Suitable for PVC	Suitable for PE, ABS and SAN+ PVC pipes	Suitable for PP
Minimal distance	Tested U/C	Tested C/C
Rigid wall	Rigid floor	Flexible wall (metal studs)

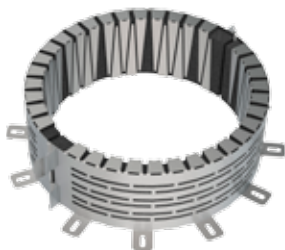
MG2-A



- Easy and rapid installation with standard screws
- Minimal collar height for a superior flexibility
- Standard tools, no sealing required
- Ideal for renovation works

Surface-mounted	Water- and frost-resistant	Aesthetic solution
Suitable for PVC	Suitable for PE, ABS and SAN+ PVC pipes	Oblique penetration till 30°
Minimal distance	Tested U/C	Tested C/C
Rigid wall	Rigid floor	Flexible wall (metal studs)

MG2-A XL

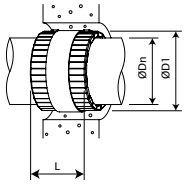


- For large diameters up to 400 mm
- Stainless steel casing
- Practical locking system
- Standard tools, no sealing required

Surface-mounted	Water- and frost-resistant	Tested U/C
Suitable for PVC	Suitable for PE, ABS and SAN+ PVC pipes	Tested C/C
Rigid wall	Rigid floor	Flexible wall (metal studs)

Dimensional range

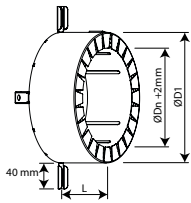
MG-U



ØDn (mm)	32	40	50	56	63	75	80	90	100	110	125	140	160
D1	49	57	67	73	80	92	101	111	121	131	150	165	185
L	96												
Kg	0,2	0,2	0,2	0,3	0,3	0,3	0,4	0,5	0,5	0,5	0,7	0,8	0,9
A	Min	Dn+27					Dn+36			Dn+40			
	Max	Dn+50											
B	Dn+50												

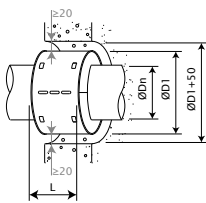
A: Mounting with screws - B: Mounting without screws

MG2-A U



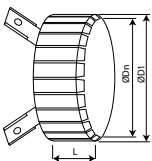
Ø Dn	32	40	50	56	63	75	80	90	100	110	125	140	160
Ø D1	63	71	81	87	94	106	111	121	131	141	175	190	210
L	60										80		
Kg	0,4	0,5	0,5	0,6	0,6	0,7	0,7	0,8	0,8	0,9	2,0	2,1	2,3
# fixations	2						3			4			
	Ø Dn (= outer pipe diameter)												

MG2



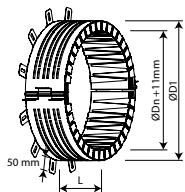
ØDn (mm)	40	50	56	63	75	80	90	100	110	125	160	
D1	67	77	83	90	102	123	133	143	153	182	215	
L	85										105	
Kg	0,16	0,20	0,21	0,22	0,26	0,43	0,51	0,56	0,58	1,23	1,54	
	117	127	133	140	152	173	183	193	203	232	265	

MG2-A



Ø Dn	32	40	50	56	63	75	80	90	100	110	125	140	160
Ø D1	48	58	68	74	80	93	110	125	132	140	173	187	206
L	40												
Kg	0,07	0,11	0,14	0,16	0,18	0,21	0,22	0,26	0,29	0,31	0,40	0,46	0,55
# fixations	2						3			4			
	Ø Dn (= outer pipe diameter)												

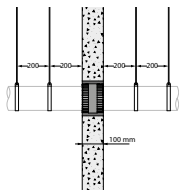
MG2-A XL



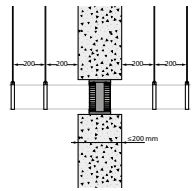
Ø Dn	200	250	315	355	400
Ø D1	271	321	396	436	481
L	100		150		
Kg	2,7	3,2	7,0	7,8	9,6
# fixations	8		10		12
	Ø Dn (= outer pipe diameter)				

Application

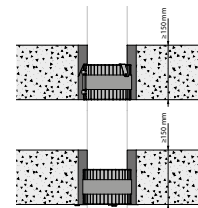
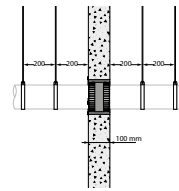
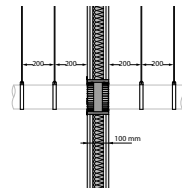
MG-U



Rigid wall and in flexible wall
(metal stud gypsum plasterboard wall), without screws

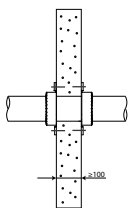


Rigid wall and in flexible wall
(metal stud gypsum plasterboard wall), with screws

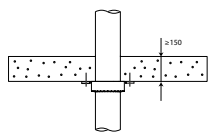


Rigid floor,
without or with screws

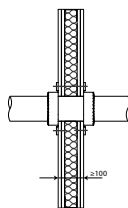
MG2-A U



Rigid wall

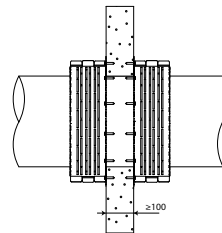


Rigid floor

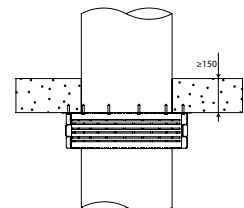


Flexible wall

MG2-A XL

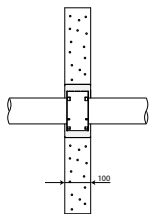


Rigid wall

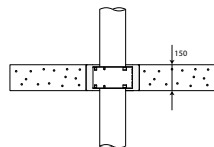


Rigid floor

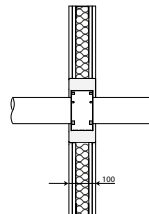
MG2



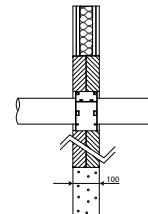
Rigid wall



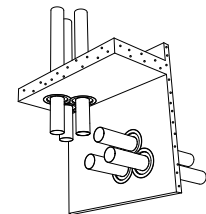
Rigid floor



Flexible wall

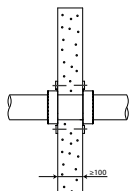


Rigid or flexible wall +
pre-coated mineral wool

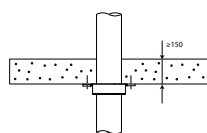


Minimal distance

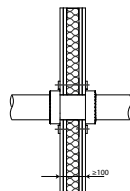
MG2-A



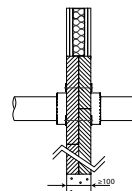
Rigid wall



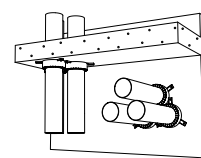
Rigid floor



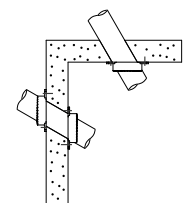
Flexible wall



Rigid or flexible wall +
pre-coated mineral
wool



Minimal distance



Oblique penetration
till 30°

Fire resistance U/U - U/C - C/C

FIRE RESISTANCE MG-U

Wall type	Pipe type	Range	Classification
Rigid wall 100 mm	PVC, PE, ABS	32-160	EI 120 UU
	PP	32-160	EI 90 UU
Rigid wall > 100 - 200 mm	PVC, PE, ABS	32-160	EI 120 UU
	PP	32-160	EI 90 UU
Flexible wall	PVC, PE, ABS	32-160	EI 120 UU
	PP	32-160	EI 90 UU
Rigid floor	PVC, PE, ABS	32-160	EI 120 UU
	PP	32-110	EI 120 UU

FIRE RESISTANCE MG2-A U

Wall type	Pipe type	Range	Classification
Rigid wall	PVC, PE, ABS, PP	32-160	EI 120 UU
Flexible wall	PVC, PE, ABS, PP	32-160	EI 120 UU
Rigid floor	PVC, PE, ABS, PP	32-160	EI 120 UU

Fire resistance U/C - C/C

FIRE RESISTANCE MG2

Wall type	Pipe type	Range	Classification
Rigid wall	PVC, PE, ABS	40-160	EI 120 U/C - C/C
Flexible wall	PVC, PE, ABS	40-160	EI 120 U/C - C/C
Rigid floor	PVC, PE, ABS	40-160	EI 180 U/C - C/C

FIRE RESISTANCE MG2-A

Wall type	Pipe type	Range	Classification
Rigid wall	PVC, PE, ABS	32-160	EI 120 U/C - C/C
Flexible wall	PVC, PE, ABS	32-160	EI 120 U/C - C/C
Rigid floor	PVC, PE, ABS	32-160	EI 180 U/C - C/C

FIRE RESISTANCE MG2-A XL

Wall type	Pipe type	Range	Classification
Rigid wall	PVC	200-400	EI 120 U/C - C/C
	PE, ABS	200-250	EI 120 U/C - C/C
Rigid floor	PVC	200-400	EI 120 U/C - C/C
	PE, ABS	200-250	EI 120 U/C - C/C

For more detailed information, please see classifications and DoP.

Installation



The fire-resistant collars are installed around plastic pipes.



They contain a high-quality intumescent material that expands when the temperature reaches about 150°C.



The pipe burns and the intumescent material fills up the opening to prevent the fire from spreading any further.

The installation must comply with the classification report and the installation manual delivered with the product.

See the technical datasheets on www.rft.be

The pipe must be supported in order to guarantee the well-functioning of the sealing during a fire. Supports and fastenings should be realised according to the rules of good craftsmanship. The anchors have to be placed as closely as possible to the wall (at maximum 500 mm for light partition walls). For built-in collars, a single collar in the wall or floor is sufficient. For surface-mounted collars, one collar on the bottom side of the floor is sufficient for floor penetrations. For wall penetrations, a collar should be installed on both sides of the wall.

Quality and simplicity

Rf-Technologies uses high-quality, in-house manufactured materials to produce its fire-resistant collars.

All components are managed and assembled by our company according to the ISO 9001:2008 quality management system.

The Rf-t fire-resistant collars are also easy to install in compliance with the tested configuration, which guarantees the quality and the security of the building site.

Packaging and label



The collars are available per piece.

Each collar is delivered with an identification label that allows to indicate where the fire-resistant sealing is located and underlines its quality.

The QR code on the label refers to an up-to-date classification overview on our website.

CE Marking

Harmonised European standards ensure that the technical performances of construction products are tested according to the same methods in all member-states. The fire resistance of penetration sealing systems is tested according to EN 1366-3 and their classification follows EN 13501-2. The Rf-Technologies collars have been tested and classified by authorised European laboratories according to these standards. The fire-resistant collars MG2, MG2-A, MG2-A U and MG2-A XL are also CE marked in compliance with ETAG 026-2. CE marking according to ETAG 026-2 for MG-U is pending.

In different construction sites, the national legislation demands a specific fire resistance for compartment walls.

You can easily select the appropriate Rf-Technologies collar for your application by consulting its European classification according to the E (integrity) and I (insulation) criteria.





RF-TECHNOLOGIES **OOSTERZELE**

RF-TECHNOLOGIES

Rf-Technologies is a leading European manufacturer of specialist solutions for compartmentation and smoke evacuation. The company sells its products via a vast network of partners in more than fifteen European countries.

Rf-Technologies was founded in 1985. It employs 170 people on two sites; one in Belgium (where its company headquarters are located) and the other in Slovakia. Ongoing investment in research and development testifies to a desire to continually develop and improve the range of products.

M5-LE8-EN-2019-11

