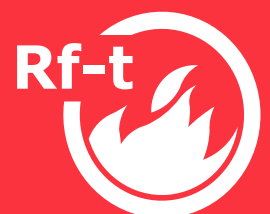
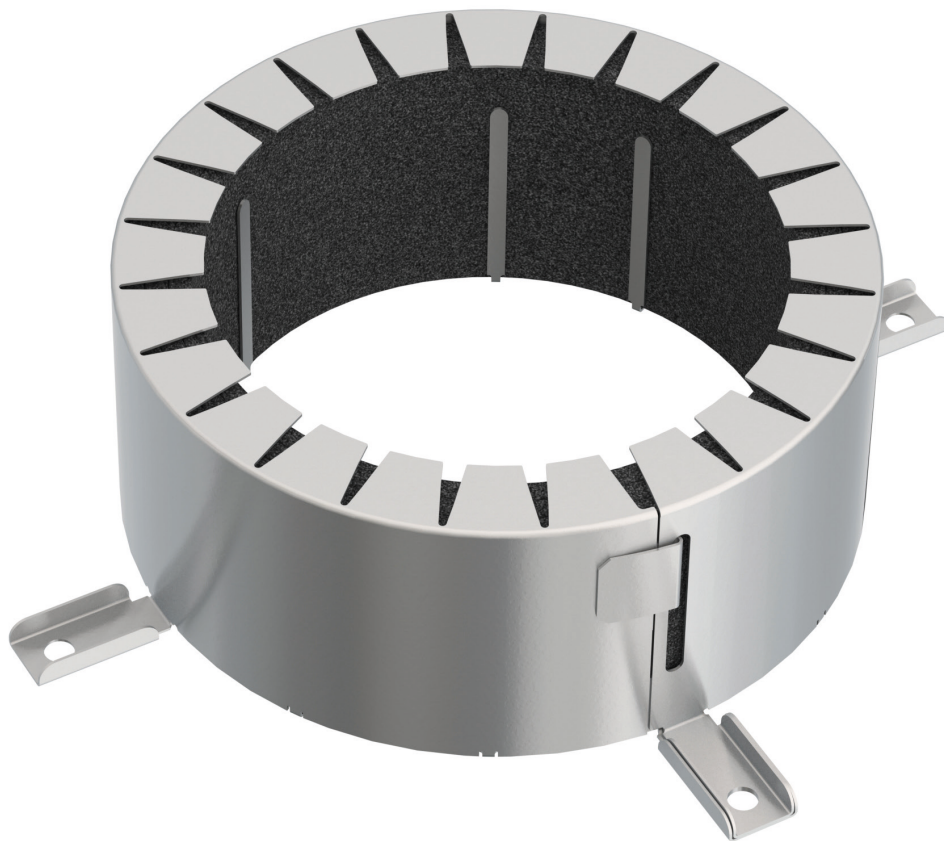


# MG2-A U

Surface-mounted fire resistant collars for ventilated evacuation pipes.



## Table of content

Classifications	3
Product presentation MG2-A U	4
Range and dimensions MG2-A U	4
Storage and handling	5
Installation	5
Installation in rigid wall and floor	5
Installation in flexible wall - metal stud gypsum plasterboard wall	7
Weights	8
Approvals and certificates	8








### Explanation of the abbreviations and pictograms

Dn = nominal diameter

E = integrity

I = thermal insulation

GKB (type A) / GKF (type F): "GKB" stands for standard plasterboards (type A according to EN 520) while "GKF" plasterboards offer a higher fire resistance for a similar plate thickness (type F according to EN 520)

	fast installation		Installation U/U, U/C, C/C, C/U (uncapped-uncapped, uncapped-capped, capped-capped, capped-uncapped).
	water- and frost-resistant		suitable for PE, ABS pipes
	suitable for PVC pipes		suitable for PP pipes
	suitable for surface-mount		

Wall type	Wall	Sealing	Type of pipe	Material pipe	Pipe diameter (mm)	Pipe wall thickness (mm)	Classification				
Flexible wall / rigid wall / rigid floor	Metal studs gypsum plaster-board Type F (EN 520) ≥ 100 mm/Aerated concrete (wall) ≥ 100 mm/Aerated concrete (floor) ≥ 150 mm	Not applicable	standard	PVC	32-63	1,8-3,6	EI 120-U/U				
					75	1,8-5,3	EI 120-U/U				
					80	1,9-5,3	EI 120-U/U				
					90	2,0-5,3	EI 120-U/U				
					100	2,1-5,3	EI 120-U/U				
					110	2,2-5,3	EI 120-U/U				
					125	2,5-7,7	EI 120-U/U				
					140	2,8-7,7	EI 120-U/U				
					160	3,2-7,7	EI 120-U/U				
				PE, ABS	32-40	1,8-4,5	EI 120-U/U				
					50	1,9-4,5	EI 120-U/U				
					56	2,0-4,5	EI 120-U/U				
					63	2,1-4,5	EI 120-U/U				
					75	2,3-6,6	EI 120-U/U				
					80	2,4-6,6	EI 120-U/U				
					90	2,5-6,6	EI 120-U/U				
					100	2,6-6,6	EI 120-U/U				
					110	2,7-6,6	EI 120-U/U				
				PP	32-40	1,8-4,5	EI 120-U/U				
					50	2,1-4,5	EI 120-U/U				
					56	2,3-4,5	EI 120-U/U				
					63	2,6-4,5	EI 120-U/U				
					75	3,0-6,6	EI 120-U/U				
					80	3,1-6,6	EI 120-U/U				
					90	3,2-6,6	EI 120-U/U				
					100	3,3-6,6	EI 120-U/U				
					110	3,4-6,6	EI 120-U/U				
				Flexible wall / rigid wall	Metal studs gypsum plaster-board Type F (EN 520)/Aerated concrete ≥ 100mm	Not applicable	standard	PP	125	3,9-9,5	EI 120-U/U
									140	4,3-9,5	EI 120-U/U
									160	4,9-9,5	EI 120-U/U
Rigid floor	Aerated concrete ≥ 150mm	Not applicable	standard	PP	125	3,9-9,5	E 120-U/U				
					140	4,3-9,5	E 120-U/U				
					160	4,9-9,5	E 120-U/U				

1 Installation U/U, U/C, C/C, C/U (uncapped-uncapped, uncapped-capped, capped-capped, capped-uncapped).



**Product presentation MG2-A U**

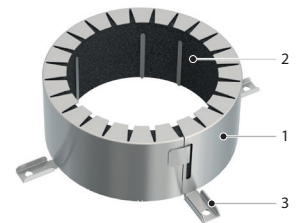
The MG2-A U surface-mounted fire resistant collar is suitable for ventilated evacuation pipes (PVC, HDPE, PP, ABS). It has been tested according to EN1366-3 and is fire resistant up to 120 minutes in rigid walls and floors and in flexible walls. The MG2-A U is sold per set of 2 pieces. In case of a vertical wall, a collar is installed on both sides of the wall. In case of a floor, a single MG2-A U is enough on the lower side of the floor.

When combustible pipes burn away, openings appear in the floor or walls through which fire can spread. Fire resistant collars prevent propagation of fire by expanding through heat, thus closing off the openings and making them fire resistant.

- ✓ suitable for ventilated evacuation pipes.
- ✓ Installation U/U, U/C, C/C, C/U (uncapped-uncapped, uncapped-capped, capped-capped, capped-uncapped).
- ✓ water- and frost-resistant
- ✓ fast installation
- ✓ no specific tools, no sealing required
  
- maintenance-free
- suitable for surface-mount
- suitable for PVC pipes
- suitable for PE, ABS pipes
- suitable for PP pipes

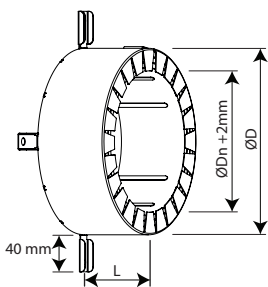


1. steel housing
2. intumescent strips
3. wall anchors



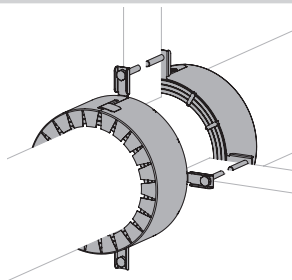
**Range and dimensions MG2-A U**

number of fixation points: 2 (ØDn 32-75) / 3 (ØDn 80-110) / 4 (ØDn 125-160)

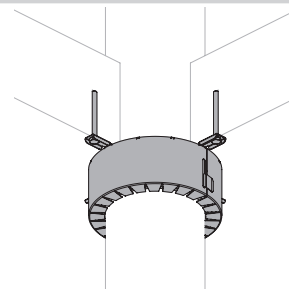


ØDn [mm]	32	40	50	56	63	75	80	90	100	110	125	140	160
D1	62,6	70,6	80,6	86,6	93,6	105,6	110,6	120,6	130,6	140,6	174,6	189,6	209,6
L	60	60	60	60	60	60	60	60	60	60	80	80	80

Wall: 2 x MG2-A U



Floor: 1 x MG2-A U



## Storage and handling

As this product is a safety element, it should be stored and handled with care.

### It is recommended:

- to unload in a dry area
- to keep in a cool, dry area, protected from frost and heat
- transport the product in a closed vehicle

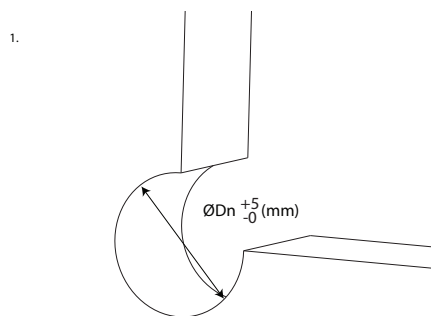
## Installation

### General points

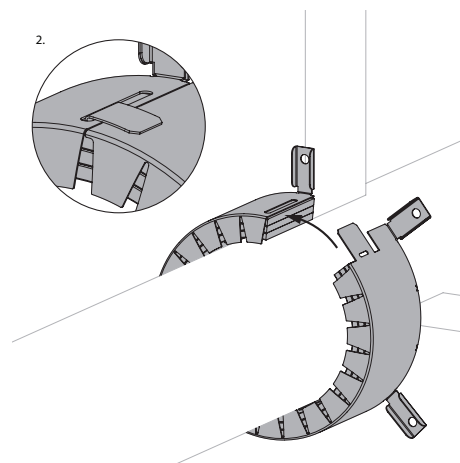
- The installation must comply with the installation manual delivered with the product and the classification report.
- The pipe must be supported in order to guarantee the well-functioning of the sealing during a fire. Supports and fastenings should be realised according to the rules of good craftsmanship.

### Installation in rigid wall and floor

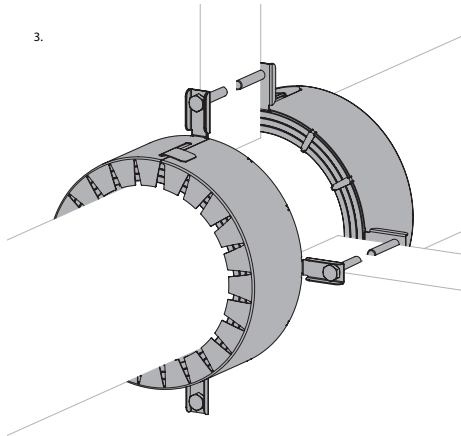
The product was tested and approved in: see the classification overview. Mounting is authorised in supporting constructions with a thickness and/or density equal or superior to the supporting construction used during the test, as described in EN 1366-3.



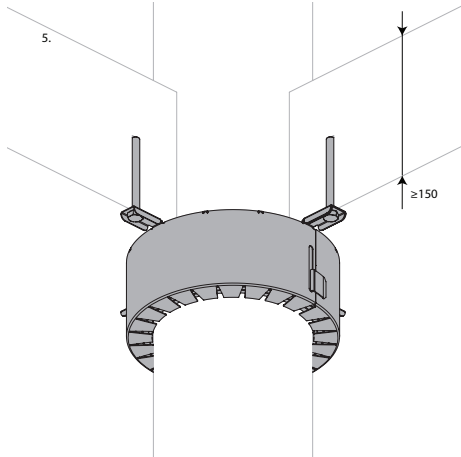
1.  
Provide an installation opening of  $\varnothing D_n$  mm.



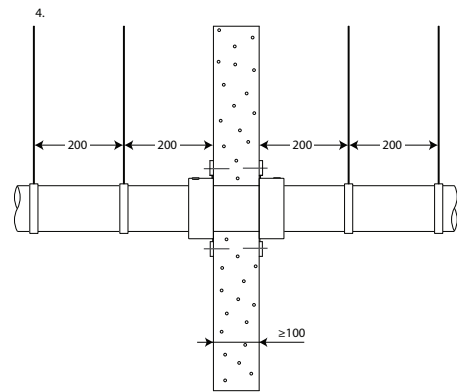
2.  
Place the plastic pipe.  
Keep one end of the collar in place with your left hand whilst bending the collar around the pipe with your right hand.  
In order to close the collar, introduce the metallic flap through the foreseen opening then place the wall anchors on top of each other (left anchor on top of the right one). Fold the flap back to the right.



3.  
Reinforced concrete: place expander bolts in the pre-drilled holes  $\varnothing$  6mm and fasten them. Aerated concrete: fix with universal M6 screws.



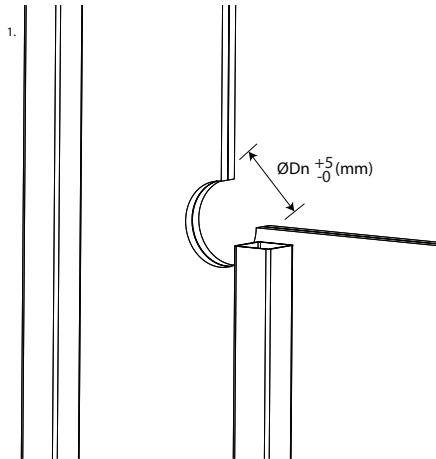
5.  
One collar on the bottom side of the floor is sufficient for floor penetrations.



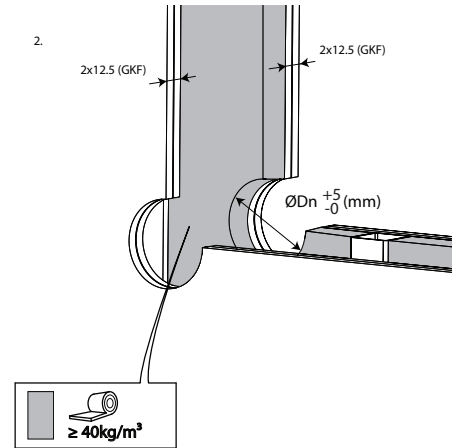
4.  
Mount the second collar on the other side of the wall in the same way.  
Apply the label nearby the collar.

## Installation in flexible wall - metal stud gypsum plasterboard wall

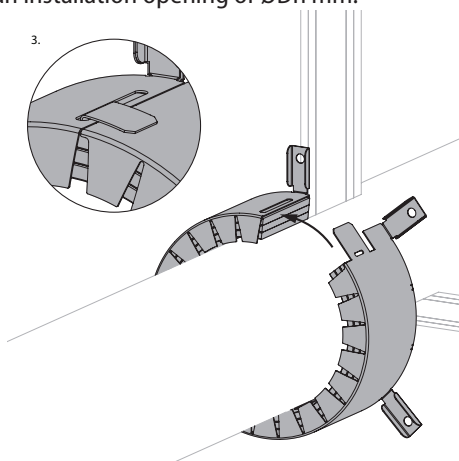
The product was tested and approved in: see the classification overview. Mounting is authorised in supporting constructions with a thickness and/or density equal or superior to the supporting construction used during the test, as described in EN 1366-3.



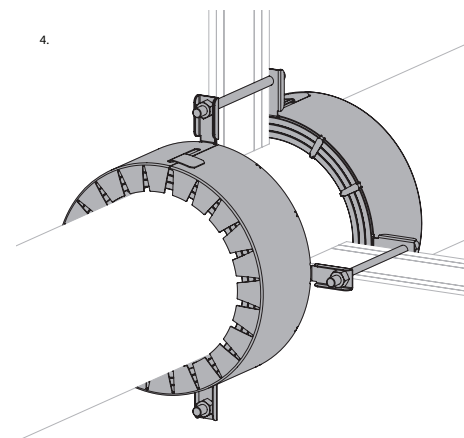
1. Fix two gypsum boards type F with a thickness of 12,5mm to one side of the metal stud wall. Provide an installation opening of  $\varnothing D_n$  mm.



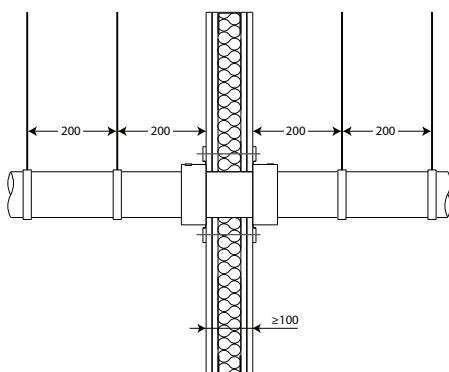
2. Insulate the wall and finish with two gypsum plasterboards type F.



3. Place the plastic pipe. Keep one end of the collar in place with your left hand whilst bending the collar around the pipe with your right hand. In order to close the collar, introduce the metallic flap through the foreseen opening then place the wall anchors on top of each other (left anchor on top of the right one). Fold the flap back to the right.



4. The MG2-A U must be fixed by threaded rods, washers and bolts (M6). Mount the second collar on the other side of the wall in the same way. Apply the label nearby the collar.



## Weights

---

### MG2-A U

<b>ØDn [mm]</b>	<b>32</b>	<b>40</b>	<b>50</b>	<b>56</b>	<b>63</b>	<b>75</b>	<b>80</b>	<b>90</b>	<b>100</b>	<b>110</b>	<b>125</b>	<b>140</b>	<b>160</b>
kg	0,4	0,5	0,5	0,6	0,6	0,7	0,7	0,8	0,8	0,9	2,0	2,1	2,3

## Approvals and certificates

---

All our products are submitted to a number of tests by official test institutes. Reports of these tests form the basis for the approvals of our dampers.